



STREET ZAHAROVA 42

Belarus. Minsk.

CJSC Beltyagmash

2022

EVERYTHING HERE IS NOT A VISUALISATION.

All the pictures you see in the presentation are real photos made in August 2022.

Thank you for you attention and let's continue :)

Building now

Belarus. Minsk. Business center In castle architectural style at st. Zaharova, 42



- Own parking (30 places)
- Open space
- Ceilings - up to 4 m.
- Windows high up to 4 m.

Spaces

Business center In castle architectural style at st. Zaharova, 42

Offices:

- from 500 to 5500 sq.m.

Retail/Restaurants:

- from 500 sq.m.



Renovation

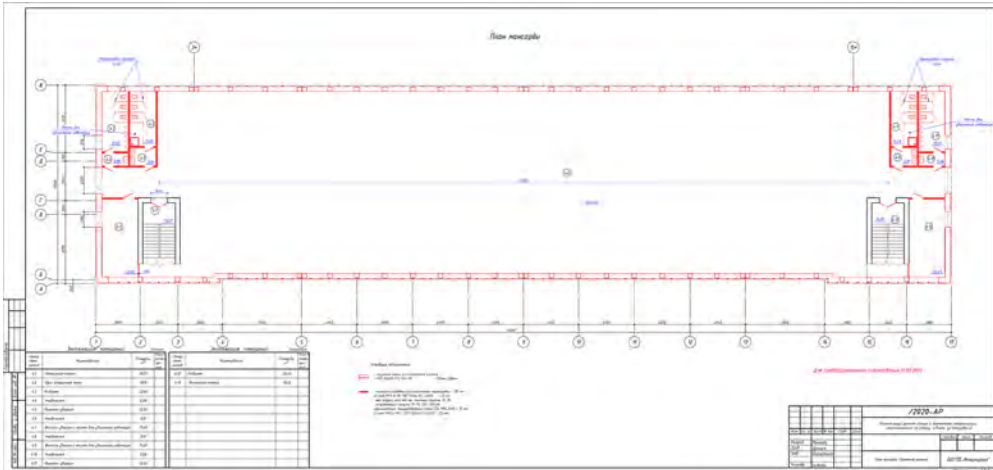


Shell and core

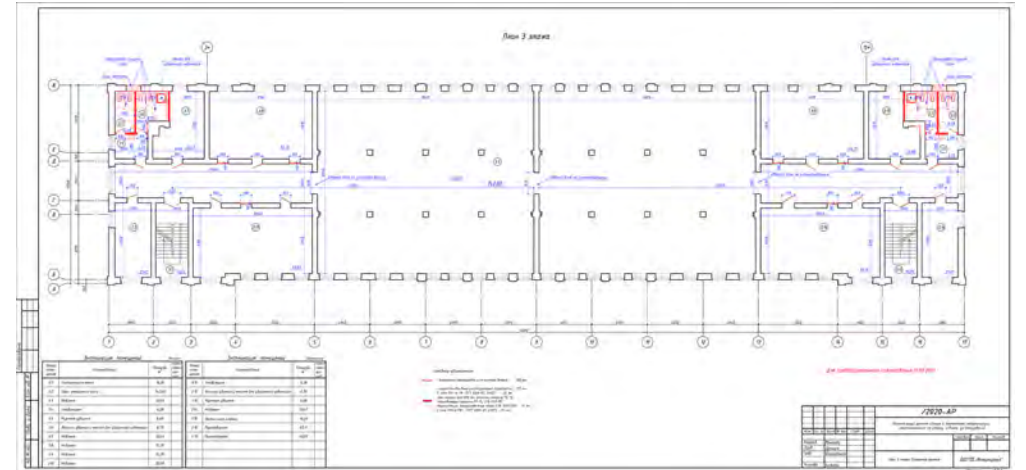


- Roads, paths, sidewalks, exterior lighting, security systems, fences and enclosing walls, drainage systems
- Building cladding including insulation, exterior walls, glazing, roof.
- Completely finished renovation (floor, walls, doors, slopes, window sills, windows, etc.) and common areas, including lobbies, stairs, toilets, basements, parking
- All basic installations, mechanical and electrical systems for premises furnishing and maintenance, electricity, water supply according to the official norms in the Republic of Belarus
- High and low voltage switchgear.
- Fire protection system

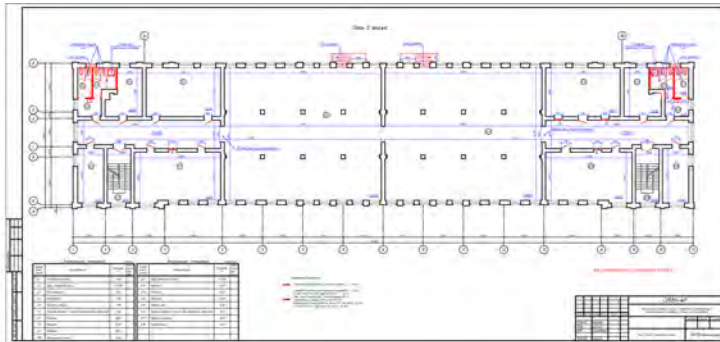
Plans



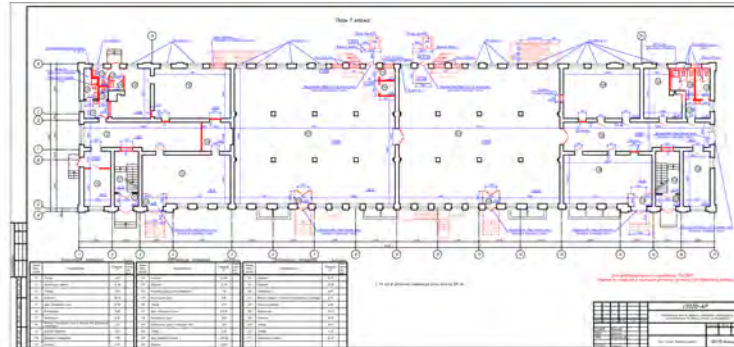
Attic – 1 202.63 sq.m.



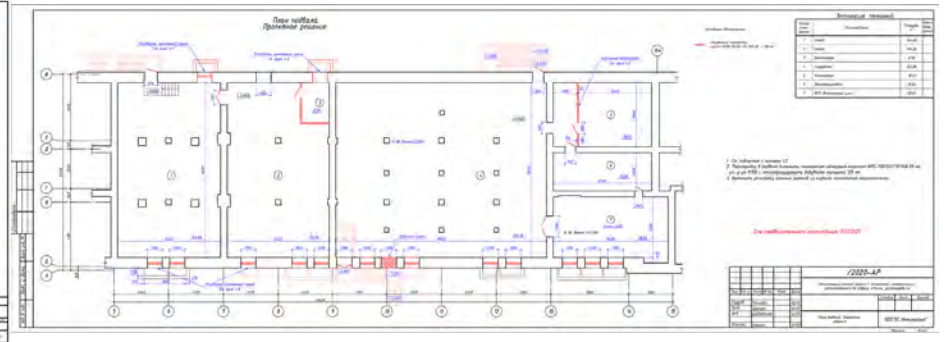
3 floor – 1148 sq.m.



2 floor – 1 148 sq.m.



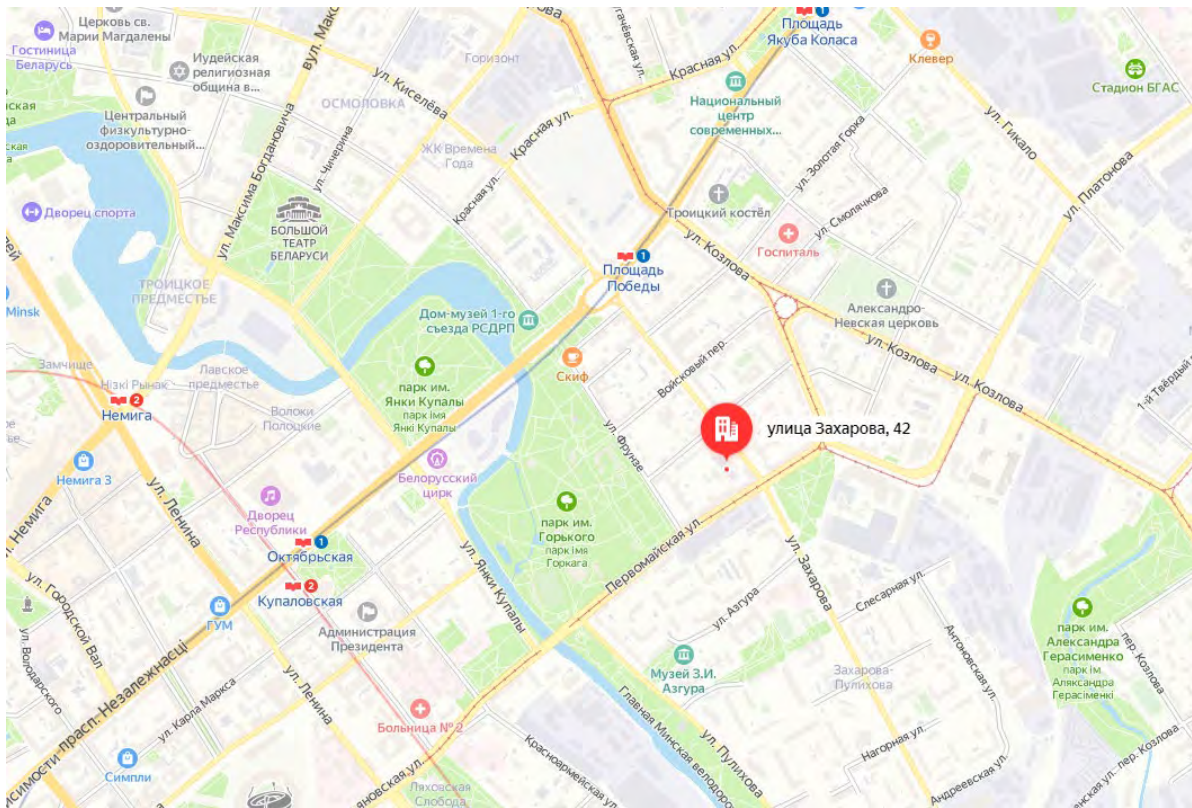
1 floor – 1 148 sq.m.



0 floor – 727.94 sq.m.

Location

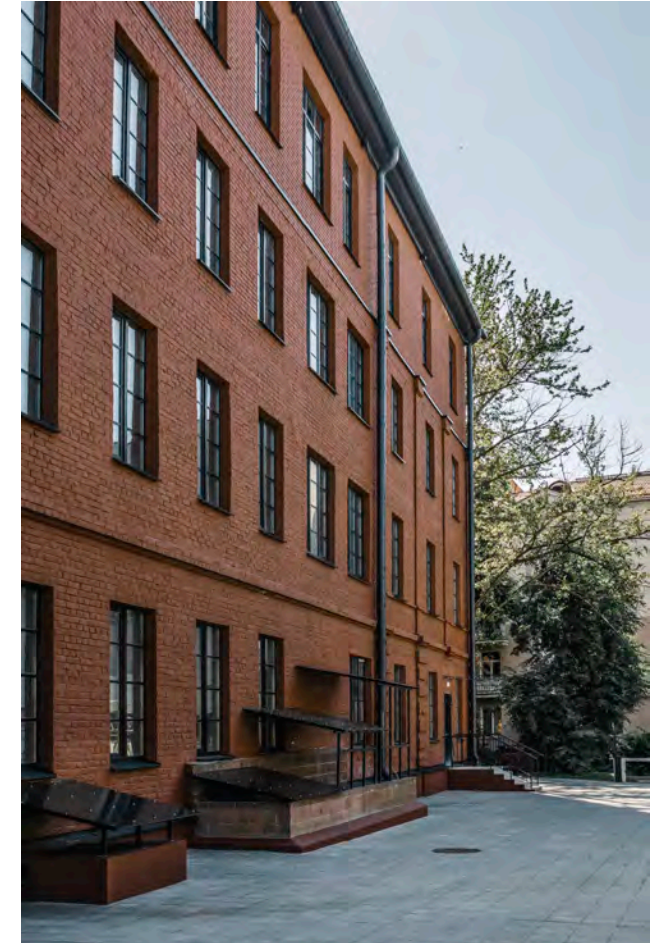
Belarus. Minsk. Business center In castle architectural style at st. Zaharova, 42



- 2 indoor bicycle parking
- 5 minutes walk to the metro Victory square
- 5 minutes to the supermarket Schedry, Karavay and Radzivilovsky, there are more than 5 cafes within walking distance (Birch, Golden Scallop, Moby Dick, FreshCafe, Skif, Sushi House, Lazia, etc.)
- Option to improve the territory near the buildings (bicycle parking, gazebos, swings, sports stations, etc.)

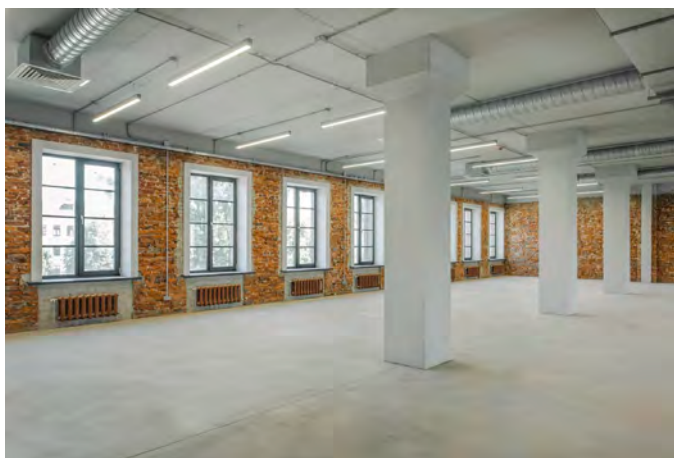
Facade

Belarus. Minsk. Business center In castle architectural style at st. Zaharova, 42



Inside

Belarus. Minsk. Business center In castle architectural style at st. Zaharova, 42



Contacts

+37544 515 02 13 (viber, telegram)

arenda@beltm.by

www.belest.by